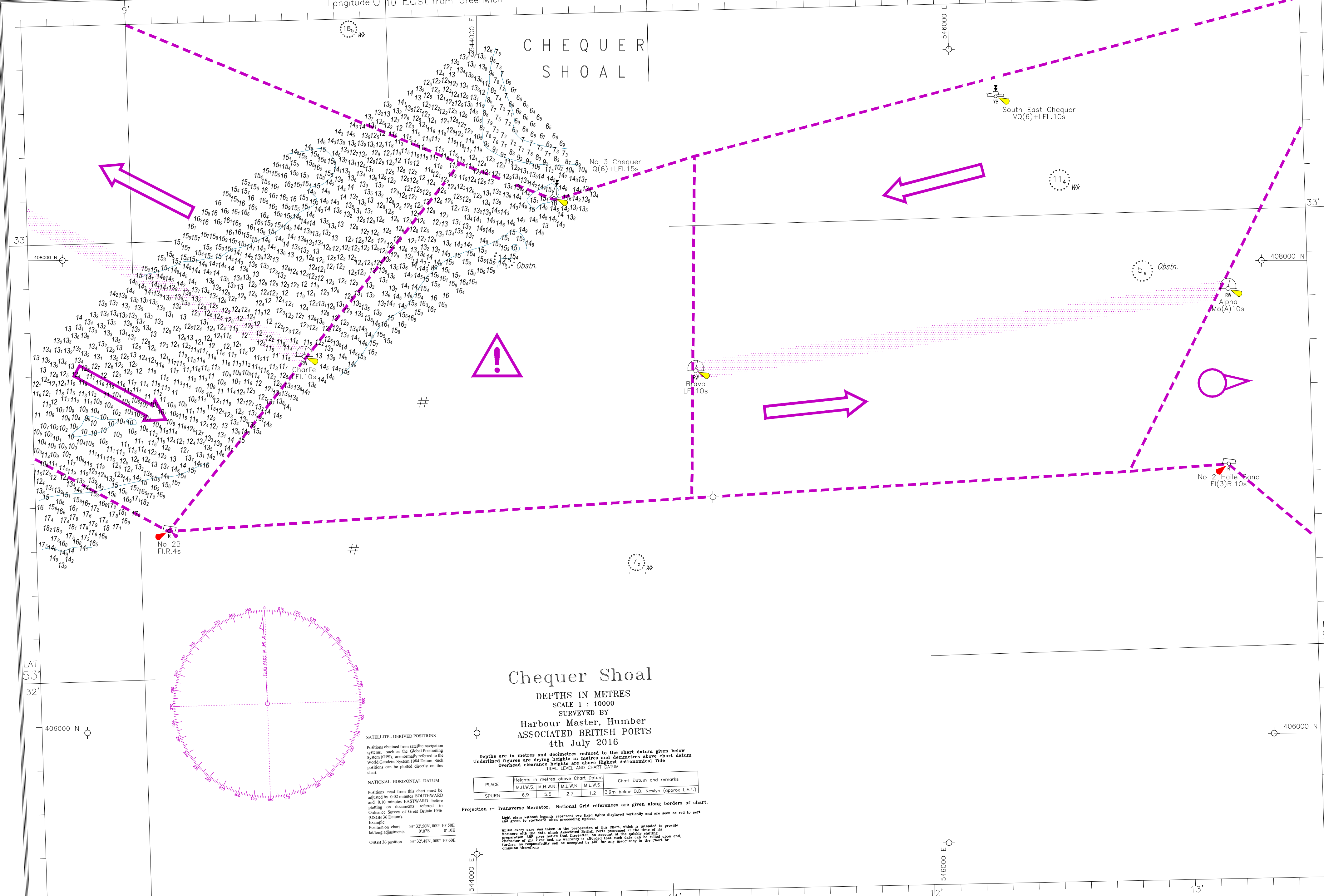


WGS 84 POSITIONS can be plotted directly on this chart



Chequer Shoal

DEPTHS IN METRES

SCALE 1 : 10000

SURVEYED BY

Harbour Master, Humber

ASSOCIATED BRITISH PORTS

4th July 2016

Depths are in metres and decimetres reduced to the chart datum given below
Underlined figures are drying heights in metres and decimetres above chart datum
Overhead clearance heights are above Highest Astronomical Tide

PLACE	Heights in metres above Chart Datum				Chart Datum and remarks
	M.H.W.S.	M.H.W.N.	M.L.W.N.	M.L.W.S.	
SPURN	6.9	5.5	2.7	1.2	3.9m below O.D. Newlyn (approx LAT.)

Projection :- Transverse Mercator. National Grid references are given along borders of chart.

Light stars without legends represent two fixed lights displayed vertically and are seen as red to port and green to starboard when proceeding upriver.

Whilst every care was taken in the preparation of this Chart, which is intended to provide Masters with the data which Associated British Ports possessed at the time of its preparation, ABP gives notice that, thereafter, on account of the quality of the information, no responsibility can be accepted by ABP for any inaccuracy in the Chart or omission therefrom.

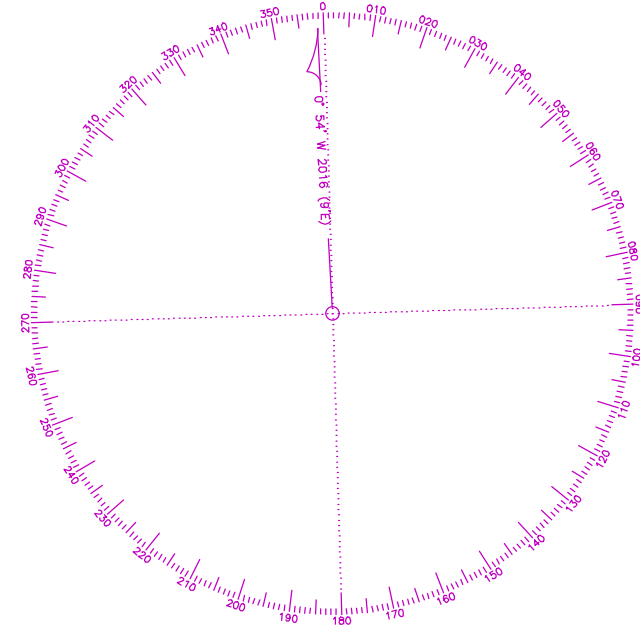
SATELLITE - DERIVED POSITIONS

Positions obtained from satellite navigation systems, such as the Global Positioning System (GPS), are normally referred to the World Geodetic System 1984 Datum. Such positions can be plotted directly on this chart.

NATIONAL HORIZONTAL DATUM

Positions read from this chart must be adjusted by 0.02 minutes SOUTHWARD and 0.10 minutes EASTWARD before plotting on documents referred to Ordnance Survey of Great Britain 1936 (OSGB 36 Datum).

Example:
Position on chart 53° 32' 50N, 000° 10' 50E
lat/long adjustments 0.02S 0.10E
OSGB 36 position 53° 32' 48N, 000° 10' 50E



LAT 53° 32'

LAT 53° 32'

406000 N

406000 N

Longitude 0° 10' East from Greenwich

WGS 84 POSITIONS can be plotted directly on this chart